



# One tree hill grapevine

**This is a free community Newsletter. However a Gold Coin Donation towards the cost of production of the Grapevine would be most appreciated. Please place your gold coin donation in the Piggy Banks at the General Store, Post Office, Fodder Store or OTH Country Market when you pick up your copy.**



**Deadline for the JUNE edition is Tuesday 24th May 2016.  
MAY - Volume 39 - Edition 4 - 2016**

## Our Anzac Dawn Service



### EMERGENCY NUMBERS

Police: 131 444  
Ambulance & Other Emergencies: 000  
Country Fire Service: 000  
Station: (When manned) 8280 7412

Hospital: 8182 9000  
000  
General Business: 8280 7055  
Bushfire Info Hotline (24hr): 1300 362 361



[www.cfs.org.au](http://www.cfs.org.au)

## From the Desk

Welcome to our special Anzac edition of the Grapevine. By the look of the crowds attending the Dawn Service on Monday we think the entire town turned out for it which was very pleasing to see. The Service was exceptional again this year. Megan who is our regular Anzac Dawn Service photographer was busy again and did an amazing job, so thank you very much from The Grapevine team.

Our cover shows local resident Gary Ferguson laying the wreath on behalf of the One Tree Hill residents, page 4 has other photos taken on the day. Let us know what you think of them.

Page 5 is full of pictures from the One Tree Hill Primary School Sports Day, it certainly looked a lot of fun with some of the old fashioned games played.

Page 10 has a cute little Mother's Day poem and it will hopefully remind everyone about Mother's Day on the 8th. We also have a recipe for delicious Melting Moments, they sound so easy to do so why not give them a go.

Our regular feature "From The Past", is on page 11, it was great to receive an email from a lady who was born here over 70 years ago, she commented on the page and said it was her favourite page. If you have any local history that didn't make the newspaper in its day then don't forget to get in touch with The Grapevine team. We would love to hear from you.

On page 15 we have uses for an old favourite, WD-40. We will try to bring you more uses for it in the next issue.

Vaseline, now who doesn't have a jar of that either inside or in the garage, it has a multitude of uses, we have brought you some ideas for using it on page 17, we also have an article about herbs. Don't forget to get them in before the cold nights are here.

### President's Report April 2016

I am very happy to report on yet another very successful ANZAC Day Dawn Service.

This major community event continues to grow in both attendance and stature and I believe we are commemorating the day in a very respectful and meaningful way.

The One Tree Hill Progress Association thanks all who contributed to this event, in particular I would like to mention several locals who played a pivotal role.

Mr. Gary Ferguson, retired Army Lieutenant Colonel, who presented a well-researched history of Australia's involvement on the Western front, this was interesting as it is now 100 years since this occurred in 1916.

The volunteers from the RAAF at Edinburgh who yet again performed a very professional service and catafalque party. This takes many months of preparation by the RAAF and we are very grateful for the very generous giving of their time and effort into making our service the successful event that it is. Mr. Tristan Hall, who was a One Tree Hill resident as a child and a current serving RAAF member said he was honoured to form part of the catafalque party.

Page 19 has an article about the Somme, it was spoken about at the Anzac Service so we thought you may like further information.

The back page brings us the sad news of the passing of Kathleen Needham, a resident here in One Tree Hill for 10 years.

We also say farewell to a stall holder from the One Tree Hill Country Market, Brian Dunks. He will be missed at the market.

Page 24 also has a couple of community notices, the FREE watercourse Management Field Day and also the Soroptimists film evening.

Finally we wish all the mums out there a wonderful Mother's Day on Sunday the 8th May.

Until next month, The Grapevine Team.

Email: [oth.grapevine@bigpond.com](mailto:oth.grapevine@bigpond.com)

Post: P.O. Box 196 One Tree Hill, S.A. 5114.

Phone: 8280 7095



I must also thank all who helped set up on Sunday afternoon and also those who loaned treasured memorabilia and uniforms for our display, this was very much appreciated.

The local hall looked a treat and the upgraded facilities worked very well. The output from the new kitchen, staffed by a team of very enthusiastic volunteers, was amazing. The scouts were also kept very busy with their popular pancakes and sausage sizzle.

The City of Playford staff worked very hard on the Friday setting up the lighting, preparing the garden area and providing parking signs.

Once again, a big thank you to all who contributed in any way to make it a very successful event.

Our next meeting is May 12th, it is our Annual General Meeting, if you would like an opportunity to contribute to your local community, please make the effort to attend.

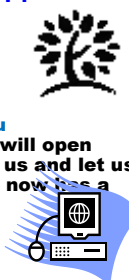
Thanks and Regards, Ian Slater, President.

To contact OTH Progress Association  
Email: [oth.progress@bigpond.com](mailto:oth.progress@bigpond.com) Ph: 8280 7095  
or by post: P.O. Box 196 One Tree Hill, SA 5114

## Read the Grapevine on line

If you haven't had a chance to see an online edition of the Grapevine please go to the site: [www.onetreehillhall.com.au](http://www.onetreehillhall.com.au) click on "About Us", scroll to the bottom of the page where you will be able to select the edition of your choice, the Grapevine will open up as a PDF. We have as many back editions of the Grapevine online as possible, if you can't find the one you are looking for, email us and let us know. This is a great way to share local news with friends and family who can't get a hard copy of the Grapevine. The Grapevine now has a facebook page. Check it out and have your say about your newsletter.

Like Us on Facebook: <https://www.facebook.com/pages/One-Tree-Hill-Grapevine/379556192156386>



This newsletter is published by the One Tree Hill Progress Association. Email: [oth.progress@bigpond.com](mailto:oth.progress@bigpond.com) Ph: 8280 7095

The views expressed in this newsletter are not necessarily those of the One Tree Hill Progress Association.

Its purpose is to share local news, views and events. Advertisers are responsible for the accuracy of the content of their advertisement.





# ONE TREE HILL GRAPEVINE CFS REPORT APRIL 2016



## Incident Report

Well, I'm starting to sound a bit like a broken record but April has been another quiet month with four minor car accidents all that we have attended. The most significant event during the month was a 38 hectare burn in the Para Wirra National Park on the 15th April that we were invited to attend. The billowing smoke was a grim reminder of recent events and concerned some residents but the fire was kept well under control by crews on the ground. The burn conducted by DEWNR as apart of their regular program of "cool" burns that control the leaf litter and undergrowth and reduce the risk of major blazes during the summer months. Details of these prescribed burns are available on the CFS website.

## Fire Danger Season Ends!

With the Fire Danger season ending in the Adelaide Metropolitan and Mount Lofty Ranges Districts on 30th April, this has been one of the quietest seasons on record for the One Tree Hill CFS. The lack of incidents over summer is not unusual but probably not what the new members expected when they joined after last year's fires. Despite that, commitment to training remains high and although summer is over, the next incident is just a phone call away and so we remain prepared.

At this time of year we are asked a lot of questions about burning in the open. There is no single answer for the people in the broader One Tree Hill area because each council has slightly different rules. Remember significant fines can apply for doing the wrong thing and that can easily be avoided by contacting your local Council to enquire about what restrictions may be in place before lighting up.

*With winter just a couple of weeks away it is a good time to review how well prepared you were for this summer, did you have a Bushfire Plan in place? Did all of the family members know what to do in an emergency? We all know it is easy to become complacent during the quiet months but we only have to think back to the horrific scenes at the Pinery fire to realise how quickly a fire can spread. As always, stay safe and drive to conditions.*

For general information please contact One Tree Hill Duty Phone on 8280 7055.  
You can also visit the CFS website ([www.cfs.sa.gov.au](http://www.cfs.sa.gov.au)) or Phone 1300 362 361.

## Did Your Know?

There are so many different kinds of apples that if you ate a new kind everyday, it would take over 20 years to try them all!

Did you know that our bodies emit enough heat in 30 minutes to boil 1.5 litres of water!

Did you know that a human brain has a capacity to store 5 times as much information as Wikipedia!

Did you know that a smile is the ultimate antidepressant?



Did you know that you can survive without eating for weeks, but you will only live 11 days without sleeping!

Did you know that laziness and inactivity kills just as many people as smoking?

## Councillor's April Report

**T**he PUBLIC CONSULTATION period for the community to view and have a say on Council's Draft Long Term Financial Plan, Asset Management Plan and Strategic Delivery (City) Plan (i.e. how much Council wishes to increase your rates by, what Council will do with that money, how Council will look after your city and its assets (now and in the future) with your money, and, how Council will pay the ever increasing debt off over a long period of time), will begin on the 2nd May culminating in a Public Hearing on the evening of the 24th May at the Council Chambers, Playford Boulevard, somewhere between 7.15 and 8.15pm. The Plans will be available on line and from Council Offices, or you can ring Council (8256 0333) for a copy.

I am aware that traditionally an ever decreasing, small number of ratepayers take the time out to be heard because of the perception that their words fall on deaf ears, however I do encourage ratepayers to turn out and have their say especially if you feel your area is being neglected.

Last edition I wrote "So! As always the bus failed to engage the rise to One Tree Hill and surrounding areas". In desperation I suggested that perhaps next year we use the CEO's inexpensive company car to help tow it (the bus) up the hill, then it occurred to me, perhaps Council's travel budget needed a boost so as we could hire Bronwyn Bishops Helicopter to get EM's and staff up the hill. Why am I so annoyed with the fact that Councillors don't see all of the city? Well after a passionate bid, I, with the help of most of my colleagues were able to secure a \$900k amount to maintain rural road resealing, albeit in Virginia, however a bid to make the \$900k a guaranteed annual funding until all roads were sealed fell on deaf ears, so next year I will have to fight yet again to secure funding for rural road sealing.

Strange it is added by way of a % increase every year to rate increases only to be swallowed up into operational expenses the following year and used to increase rates in that financial year, seems like a bit of compounded double dipping to me. EM's need to experience the whole of the local areas and then there will be no need for expensive 4WDs or helicopters!

The lack of progress at the Kersbrook Roundabout seems to continue despite assurances that the works will be completed by late June, early July, perhaps I shouldn't be surprised.

At the time of writing this the ANZAC day commemoration event has not occurred but I am certain it will have been a great success with the OTH Progress Association and volunteers having once again done an amazing job. Here's hoping the weather was kind to us and congratulations and thanks to all involved.

If you have any concerns or issues with or about our City, please in the first instance phone Council's 24 hour phone number "8256 0333" and or email: [playford@playford.sa.gov.au](mailto:playford@playford.sa.gov.au) , and cc you email to me at [crjfederico@playford.sa.gov.au](mailto:crjfederico@playford.sa.gov.au) . When speaking to Council please remember to get a Customer Reference Number to ensure registration, and easy identification of your communication. If you have a pressing concern you can talk to me at the Country Market, or pop a note into my letter box or email me. It would be appreciated if you put your concerns in writing.

Cr Joe Federico  
Fax: 8280 7963  
Phone: 0417 016 164





# Anzac Dawn Service

## One Tree Hill



Many thanks to Megan for her wonderful photos once again.



# One Tree Hill School Sports Day



School Principle Sharon with the team leaders from the Yellow Team who won.

One Tree Hill Primary School and Preschool celebrated their Sports Day on Friday 8th April. It was a fun day with all of the students showing respect for others and their school. Their sportsmanship was outstanding throughout the day.

Before lunch, the Junior Primary students participated in many tabloid and team activities including an obstacle course, Accuracy Kick, Basketball Shoot, Bean Bag Relay, Rob the Nest, as well as the all time favourites the Sack Race, Fireman Relay, Parachute Games and the Dress Up Relay.

The Primary students enjoyed many of the same activities but also after recess played "Bush Cricket", European Handball, Starwars and an active version of Noughts and Crosses.

After lunch the year level sprints began with the Year 7s racing 100 metres.

The Captains and Vice-Captains were outstanding, they provided excellent leadership skills to their teams.

The School thanks all the dedicated friends and families for volunteering on the day to help with various activities.

Well done to all the students at the OTHPS and their teachers for having such a fun filled day.

Congratulations to the Yellow Team who won the Sports Day.

Many thanks to Trent from Room 16 for his wonderful photography work. Also special thank you to the Abelas family for photos.



Children and parents all enjoyed the day at the OTH Primary School Sports Day.



Riley competing in the sack race



Riley enjoyed participating in the events while his brother Eric looks on.



# ONE TREE HILL UNITING CHURCH



## OUR VISION

**"People of Faith, sharing God's Love as we Worship and Serve in the Community"**

### SUNDAY ACTIVITIES 10.00am

#### Sunday Service and Sunday School

Visiting children are welcome to join our children attending Sunday School which takes place during the Service.

#### SMYG (Sunday Morning Youth Group) & Young Adults

Meet every Sunday at 10.00am with their leaders whilst the Service is taking place. Throughout the year they enjoy various activities - paint-balling, 10 pin bowling, weekend camps, cinema evenings, and more.

New members are very welcome, just come along to their room located behind the church in the shed!

### OP SHOP

Our church, together with three other local churches, runs the Red Bird Op Shop in Elizabeth North, with all proceeds going to the Churches and Mission. Donations of second hand clothing are always appreciated, and can be dropped off at the shop at Hilcott Street, Rosewood Village, Elizabeth North between 9.30am and 3.00pm Monday to Friday.

### MARKET STALL

Our ladies run a stall each month at the One Tree Hill Country Market selling a variety of home-made cakes, slices, and biscuits, plants, bric-a-brac, games, and much more. Drop on by, we'd love to see you.

### DON'T FORGET! - CAR BOOT SALE

#### OTH UNITING CHURCH CAR PARK

#### SATURDAY 7th MAY - 9am - 1.00pm

Home made produce & cakes, plants, bric-a-brac, games, books, 2nd hand goods and much more.

### MONTHLY FELLOWSHIP MEETINGS

Come along and join us

On **Wednesday 25th May 2016.**

Morning tea will begin at 10am followed by our

Speaker from the

**Grenville Centre who will be speaking on  
"Services for Seniors"**

**For further information please phone  
Maureen on 8280 7368**

### Household Hints

Have your pillows gone flat? Put them in the sun for about 30 minutes. The sun will absorb moisture and plump up your pillow.

Using your mobile phone while it is charging is dangerous and can cause damage to the battery. This is why the cords are short.

Rub Canola/Olive oil on your knife before cutting onions to prevent your eyes from watering.

Cloudy or dull glassware will come out of your dishwasher crystal clear and sparkling if you add approximately one tablespoon of Epsom Salts to your next wash cycle.

## 2016/17 Draft Business Plans Community Consultation

The City of Playford invites community feedback on its Draft Business Plans for 2016/17:

Draft Strategic Plan  
Delivery Program  
2016/17 - 2018/19

Inclusive of 2016/17  
Draft Annual Business  
Plan and Budget

Draft Long Term  
Financial Plan  
2016/17 - 2025/26

Draft Asset  
Management Plan  
2016/17



### Have your say

The public consultation will run from Wednesday 4 May to Tuesday 24 May 2016. You can provide comment and feedback via a written submission, the feedback form available on the website, or verbal submission at the public hearing in the Council Chamber at 7pm on Tuesday 24 May 2016.

The 2016/17 Draft Business Plans are available at:

City of Playford web site [www.playford.sa.gov.au/businessplans](http://www.playford.sa.gov.au/businessplans)

Via request at [publicconsultation@playford.sa.gov.au](mailto:publicconsultation@playford.sa.gov.au)

**Customer Care locations** at Playford Civic Centre, 10 Playford Boulevard, Elizabeth or Stretton Centre, 307 Peachey Road, Munno Para.

Feedback should be submitted by 5pm on Tuesday 24 May 2016 and should clearly indicate if you wish to be heard at the public hearing.

Any submissions received may be made publicly available, unless specifically advised otherwise by residents.

Written feedback can be sent to:  
Business Plans Consultation  
Playford Operations Centre  
12 Bishopstone Road,  
Davoren Park, SA 5113  
Email: [publicconsultation@playford.sa.gov.au](mailto:publicconsultation@playford.sa.gov.au)

    [playford.sa.gov.au](http://playford.sa.gov.au)

# How Well Do You Know South Australia?

- 1: In South Australia's early days, people travelling up the Mount Barker Road into the Adelaide Hills had to pay a fee at the toll house at Glen Osmond. There were occasions when the fee was waived for people. When did this happen?
- 2: In 1878, the first major long-distance telephone call in Australia was made. Where was it made between?
- 3: Name Adelaide's three universities.
- 4: Which Australian Prime Minister opened the Festival Centre in 1973?
- 5: Compared to the overall six states of mainland Australia what fraction does South Australia represent?
- 6: Approximately how many islands are there off the South Australian coast?
- 7: What is the approximate dimensions of Wilpena Pound in the Flinders Ranges?
- 8: What is the dog fence?
- 9: Where is the smallest town in South Australia and what is its major attraction?
- 10: Where is the highest point in the state?
- 11: How large is the State of South Australia compared with Japan?
- 12: How high is Mt Lofty?
- 13: The Heysen Trail ends in the Northern Flinders Ranges. Where does the trail begin?
- 14: Which South Australian jetty has the distinction of being

- the longest timber jetty in the Southern Hemisphere?
- 15: How many bridges cross the river at Murray Bridge?
- 16: What is the geographical extent of the Flinders Ranges?
- 17: Where is the home of pinus radiata?
- 18: Where can your car actually roll uphill without the engine running?
- 19: Name the mid-north town where C.J. Dennis spent most of his boyhood days?
- 20: Darwin is closer to Adelaide than it is to Sydney. True or False?
- 21: Which towns are know as the Iron Triangle?
- 22: How long is the River Murray?
- 23: What is the total area of South Australia?
- 24: Which towns form the copper triangle?
- 25: Where is there a Conservation Park with very important glacial history?



**Local Electrician**

**All Electrical Work**

- Sheds and Carports
- Switchboard alterations and upgrades
- Bores and Pumps
- Security Lighting
- After Hours Call Out Service
- Friendly, Reliable Service
- FREE Quotes

**Call Cosi Puccini on**

**0421 773 673**

Email: [cosipuccini@bigpond.com](mailto:cosipuccini@bigpond.com)

Lic-PGE 177700

ABN-94 535 175 644

**DOMESTIC**

**COMMERCIAL**

**INDUSTRIAL**



**Rose Creek Weddings**  
**"One Tree Hill"**

*Your Celebrant*

*Sharon Good*

*Registered Marriage Celebrant  
 Working with couples to ensure that  
 their day reflects their personalities*

**Phone: 0488 091 260**

**Email:**

**[goodlaw2@bigpond.com](mailto:goodlaw2@bigpond.com)**



ABN: 43 475 342 076



## Crime Report – ONE TREE HILL Rural Watch – Offences reported between 20th March and 17th April, 2016

<b>Overnight March 20th</b> Shipping Container entered and power tools stolen.	<b>Serious Criminal Trespass - Non Residential</b> Black Top Road, GOULD CREEK
<b>Daylight hours April 8th</b> Unknown persons have forced open sliding door of house to gain entry. Cash and Jewellery stolen.	<b>Serious Criminal Trespass - Residential</b> Alexander Avenue, BIBARINGA
<b>Overnight April 11th</b> Vehicle left on side of road overnight - stolen.	<b>Illegal Use of Motor Vehicle</b> Gawler Scenic Route, ONE TREE HILL
<b>Overnight April 12th</b> Vehicle entered and keys stolen.	<b>Theft from Motor Vehicle</b> Johnson Road, ONE TREE HILL

**As always if you have any information to assist with any crime issues in the area please phone Police Communications on 131 444**

*Many thanks to Darren McCue (Senior Sergeant First Class) - One Tree Hill Rural Watch Liaison Officer for this information.*



## Northern Sound System Receives Gift

The City of Playford's Northern Sound System has received a generous gift from the "Just Us Entertainment Group" which will provide valuable support and assistance to youth in the Playford community.

The Just Us Entertainment Group has brought music and laughter into the lives of the aged for over 20 years, recently disbanded and in doing so, felt compelled to give back to the community. The group unanimously agreed to donate its closing assets of \$800 to Northern Sound System to cover costs for studio time.

It is hoped that the donation will be beneficial to young, aspiring musicians and help them move closer towards their goals.

Northern Sound System opened in January 2007 with construction of the facility funded by Council, in conjunction with the Federal Government's Sustainable Regions program.

NSS uses music to engage with young people, building on the rich musical history of Adelaide's northern suburbs. Since the 1970s, the area has been a spawning ground for musical talent in South Australia, with popular Australian artists such as Jimmy Barnes and Cold Chisel, The Angels and the Little River Band earning their stripes in venues across the city.

NSS uses a unique model of collaboration, partnering with schools, government agencies, community organisations and music businesses to enable local engagement, training and skills development. The centre offers a space where people can come together to enjoy music, learn new skills, share ideas and build a sense of belonging and community participation. It also provides an opportunity for people of all ages to make and enjoy music while supporting the rejuvenation of the music industry in the northern suburbs.

The NSS is located at 73 Elizabeth Way.  
For all enquiries please ph:  
Northern Sound System on  
**8255 5560**  
or go to their  
facebook page.





### TIMMEL PLUMBING SERVICES

**CALL A LOCAL**

DOMESTIC - COMMERCIAL - INDUSTRIAL

- GENERAL PLUMBING & MAINTENANCE
- HOT WATER REPAIRS & REPLACEMENT
- DRAIN CLEANING & CAMERA INSPECTION
- ALL SEPTIC TANK INSTALLATIONS
- WE CAN ALSO DO:

RETAINING WALLS - CONCRETE WORK & EARTHWORKS

**CALL TIM ON**

**0419 550 497**

LIC. BLD179279

## One Tree Hill Hall Hire

The One Tree Hill Institute is a  
**great venue for an  
Engagement, Wedding,  
Special Birthday, Naming Day  
or any other special occasion**

**Competitive Rates**



Check us out on the web:

[www.onetreehillhall.com.au](http://www.onetreehillhall.com.au)

Phone: 8280 0000 or

Email: [oth.hall@bigpond.com](mailto:oth.hall@bigpond.com)





# Hilltop Fresh Flowers

## FLOWERS FOR ALL OCCASIONS

WEDDINGS

ENGAGEMENTS

BIRTHDAYS

SYMPATHY

NEW BORN'S

SPECIAL EVENTS



Delivery to all  
suburbs in Adelaide  
Metro Area

654 Yorktown Road, One Tree Hill

Phone Orders Welcome  
We accept Visa/  
MasterCard/Eftpos

WHOLESALE FLORIST

NOW OPEN TO THE PUBLIC

OPEN MONDAY—THURSDAY 8am - 3pm

Ph: 8280 7045



ABN: 81 162 597 542

## Olympic Boring Contractors Pty.Ltd DRILLING WATER WELLS



Irrigation, Stock and Domestic Bores,  
Specialized Machinery to Drill up to 250m  
with Mud, Air & Auger

Call local Michael Ferraro  
Resident of OTH for almost 30 years

**Ph: 0408 847 060**  
**Or: 8380 9474**

## GARDEN MULCH

Delivered to your Home

**\$50.00 per Truck Load**

(approximately 10 cubic metres)

Contact the "Cozzies" at

Para Trees for your

Local Delivery

Jason: **0408 857 931**

Email: [admin@paratrees.com.au](mailto:admin@paratrees.com.au)



# Melting Moments

Melting Moments are an iconic biscuit that you will enjoy making for family and friends. This recipe has a tangy lemon taste and lots of delicious raspberry filling. You'll get about 12 biscuits out of this batch so we would suggest that you double the ingredients. Enjoy!

## Ingredients for Biscuit:

125grams Butter softened  
 ¾ Cup Plain Flour  
 ¼ Cup of Icing Sugar  
 2 Tablespoons Corn Flour  
 2 Tablespoons Custard Powder  
 1 Teaspoon Lemon rind, finely grated



## Filling:

¼ Cup Frozen Raspberries (or fresh)  
 60 grams Butter (extra)  
 Two thirds cup of Icing Sugar (extra)  
 ½ Teaspoon of Lemon rind (extra)  
 2 Tablespoons Raspberry jam

## Method:

Preheat oven to 160°. Line a baking tray with baking paper. Use an electric mixer to beat the butter in a medium sized bowl until very pale. Add the flour, icing sugar, cornflour, custard powder and lemon rind. Stir until just combined.

Roll 2 teaspoons of mixture into a ball and place on the prepared tray, 3cm apart. Use a fork, lightly dusted in cornflour to gently flatten each ball. Bake for 10 minutes or until lightly golden and just cooked through. Set aside on the tray for 30 minutes to cool.

Filling: Place the raspberries in a small saucepan over low heat. Cook for 2 minutes or until raspberries break down. Strain through a fine sieve into a bowl. Use an electric mixer to beat the extra butter in a medium sized bowl until very pale. Gradually add the icing sugar, beating well after each addition. Add the raspberry puree and the extra lemon rind. Beat until well combined. Spread the icing over the flat side of half of the biscuits. Spread jam over the remaining biscuits. Sandwich the biscuits together.

But you are glad you made double the quantity! They are so delicious!



## Can Saver Plus assist you with high school costs?

Join Saver Plus and match your savings, dollar for dollar, up to \$500 for educational costs including:

- school uniforms and text books
- computers, laptops and tablets
- excursions and camps
- sports equipment, uniforms and lessons
- music tuition and instrument hire.

You may be eligible if you have a Health Care or Pensioner Concession Card, are at least 18 years old, have some regular income from work (you or your partner) and have a child at school or study yourself.

Contact Jamie Ward, your local Saver Plus Worker:  
 0466 007 775 or  
 jward@anglicaresa.com.au

Saver Plus was developed by ANZ and the Brotherhood of St Laurence and is delivered in Salisbury and Playford by Anglicare SA. The program is funded by ANZ and the Australian Government.

## 10 Things my Mum Taught Me About Being a Mum

When they cry .... Kiss them.

When they are afraid .... Hold them.

When they speak .... Listen.

When they ask .... Answer.

Let them explore.... Dirt washes off.

When you say "please" & "thank you" to them they will say it to you.

Silly is a good thing to be.

Always do the right thing .... Even when nobody's looking.

There are many crises in the world .... Spinach on the wall isn't one of them.

Faith opens many doors ....

## How Well Did You Know South Australia?

### ANSWERS TO QUESTIONS ON PAGE 7

- 1: When people were travelling to church.
- 2: Semaphore to Port Augusta.
- 3: University of South Australia, Adelaide University and Flinders University.
- 4: Gough Whitlam.
- 5: One eighth of the continent.
- 6: Approximately 100.
- 7: The Pound covers 80square kms, and is 500m high.
- 8: The Dog Fence is an unbroken barrier of wire netting about 2 metres high extending more than 5,400kms through South Australia and parts of New South Wales and Queensland. It was erected to protect sheep lands from dingo attack and is regularly repaired by boundary riders.
- 9: William Creek, 450kms north of Adelaide has a population of three and has one building - the hotel!
- 10: Mount Woodroffe in the Musgrave Ranges in the far north-west of the state, it stands at 1,435 metres above sea level.
- 11: Our state is approximately 1 million square kms, about three times the size of Japan.
- 12: Mt Lofty rises to 711 metres above sea level.
- 13: Cape Jervis on the Fleurieu Peninsula.
- 14: Port Germein jetty, which is now used for recreational purposes.
- 15: Three bridges are found here at South Australia's largest river town.
- 16: The ranges extend from Crystal Brook to Peterborough and continue to an area approximately 160kms north of the town of Marree.
- 17: Wirrabara Forest in South Australia's mid-north.
- 18: At Magnetic Hill, east of Orroroo.
- 19: Laura in the mid-north.
- 20: True, Adelaide is 2594km away, Sydney is 3157km away.
- 21: Port Pirie, Port Augusta and Whyalla.
- 22: 2,600km from the Snowy Mountains to Endeavour Bay in South Australia.
- 23: 984,377 square kms, or 380,070 square miles.
- 24: Kadina, Wallaroo and Moonta.
- 25: The Hallett Cove Conservation Park is noted as one of the most important geological parks because of its evidence of glaciation and Antarctic rocks.



# From The Past - Assorted Clippings From The Early Days

## ONE TREE HILL May 27 1885

The anniversary of the One Tree Hill Wesleyan Sunday-school was held on May 24, sermons being preached by Rev. R.S. Casely and Mr. H. H. Blackham, jun. On Monday there were tea and public meetings, the latter being preside over by Mr. Kelly, superintendent. Addresses were given by Messrs. J. Jones, Marsh, Wm. Bowman, and the Rev. R.S. Casely, who also presented a prize to each of the children attending the Sabbath School.

## ONE TREE HILL May 23, 1902

The Department of Agriculture, through the Agricultural Bureau, has taken an intelligent practical step by forwarding to various parts of the state manures - five different sorts in each consignment of half a ton - with which to experiment upon pasture. Strips of land, a considerable distance apart, are to receive the dressings so that the results, each variety taken into separate account, may be readily adjudicated upon. The half - ton parcels are forwarded free of cost to the experimenters. The success of artificial manures in wheat growing has been proved beyond doubt; and the fact that subsequent pasture gets lambs into condition for market fully two months in advance of the ordinary supply is sufficient to warrant the present experiment.

Mr. Ifould, of Uley farm, has been entrusted with the work in this district and finished, with the drill this week. Circumstances permitted him to treat a variety of soil-loam, sand, light, and fairly heavy - so that interesting results are expected. The absence of rain at this juncture may not be in favour of the soil receiving the full benefit of the manure, but it will furnish an interesting feature of the trial.

## CARS COLLIDE HEAD ON NEAR ONE TREE HILL May 24 1948

Mrs. Bassnett, of One Tree Hill, was admitted to hospital with shock, cuts and abrasions after a head-on collision between two motor cars on the One Tree Hill Road on Saturday night.

Her husband was driving one car and the other was occupied by Mr. and Mrs. F. McKenzie of One Tree Hill, who were treated for minor injuries.

## FOXES IN ONE TREE HILL May 15 1905

Foxes have made their presence felt here at One Tree Hill by leaving headless poultry of all descriptions under the roosts. One resident hearing a disturbance in his turkey roost one night, went out to investigate. He could see nothing, but his dog got on the trail, and discovered a headless opossum, still warm, from the jaws of a fox. Opossums seem rather a favourite dish with foxes, as on Friday morning Mr. A. Blencowe, on going round his opossum traps, found a vixen in one. It has dragged the trap from its moorings. He dispatched the vixen, which was full grown.

## SPORTS AT ONE TREE HILL October, 1936

A large attendance of past and present residents of the district assembled on the McGilp recreation park on Saturday to take part in the local Centenary celebrations.

The official party included Mr. L. K. McGilp (President), Mr. K.G. Fry (Secretary of McGilp Park), Messrs. F.L. Ifould, J.C. Clucas, T.S. Harvey, J. Chinner, E.J. Harvey and their wives.

The Uley school children, under the direction of the head teacher (Mr. N. Robinson) gave a gymnasium display. A local team of girls played basketball.

The Gawler South tennis team played the local team in an association match, which resulted in a victory for One Tree Hill by 13 sets to 5. A cricket match between Roseworthy College and One Tree Hill was also played.

A ball was held in the Institute at night. Items were given by Misses Kempton (tap dancers) and Mr. H. Rule (entertainment). Guessing competitions were won by Mrs. E. Penberthy, Miss Leonard and F. Maynard.

Sports results: - 50 yards boys 6 to 7 years: Neil McGilp, Ray Clayson. 75 yards boys 8 to 11 years: Allan Clayson, Graham McKenzie. 100 yards boys 12 to 14 years: Eric Chinner, Max Horgan.

50 yards girls 6 to 8 years: June McGilp, Josephine Kelly. 75 yards girls 9 to 11 years: Betty Kirk, Helena Threlfall. 100 yards girls 12 to 14 years: Dorothy Blackham, Gloria Threlfall.

50 yards handicap boys 6 to 7: Neil McGilp, Les McKenzie, 75 yards handicap boys 8 to 11: Allan Clayson, Rollo Threlfall. 100 yards handicap boys 12 to 14: Eric Chinner, Max Horgan (dead heat).

50 yards handicap girls 6 to 8 : June McGilp, Josephine Kelly. 75 yards handicap girls 9 to 11: Helena Threlfall, Betty Kirk. 100 yards handicap girls 12 to 14: Dorothy Blackham, Gloria Threlfall.

Obstacle race boys 6 to 7: Neil McGilp, Ray Clayson. Boys 8 to 11: Allan Clayson, Ron Reid. Boys 12 to 14: Peter Reid, Kelvin Watson. Potato race: Girls 6 to 8: June McGilp, Barbara Reid. Girls 9 to 11: Eileen Tilbrook, Helena Threlfall. Girls 12 to 14: Edith Reed, Dorothy Blackham. Relay race: Eric Chinner's team. Men's cycling race 2 1/4 miles: Bill Ramsey, Lance Burg. Men's high jump: Max Smith (5ft 3in).

## AMATEUR HOUR AT ONE TREE HILL May 17 1946

A full house on Saturday, April 27th, enjoyed an Amateur Hour staged by the One Tree Hill Institute Committee.

Fourteen items were presented, the prize winners being Miss B. May 1st, Miss M. Ormsby 2nd and Mr. Ifould 3rd (impromptu speech).

Entrants were Miss Chinner and Ormsby. Mr Ron Turner (vocal solos), Messrs. Finch, Harmer and W. Kelly, Miss M. Tambllyn. Barry Lang and Diana Lange (recitals), Misses Walter and May (piano solos).

A dance followed. Mr. Harmer providing music. Institute funds benefitted by £2, proceeds from the evening.

**Dairymen!**

**CREAM**

We extend to All Dairy Farmers an invitation to send their Cream to our Factories.

**Support the Factory in your own District**

All weighing, Grading and Testing accurately done by careful and experienced men.

**Cream Cans for Sale**

Send by Rail or ask our Motor Lorry to Call.

Top Prices Paid for Choicest Quality Butter Fat.

**TAYLOR BROS. LTD.**

Gawler, Extonda, Auburn, Narrogin and Riverton

Now that Churchill tanks are no longer needed . . .

**VAUXHALL**

are back on car production

One of Vauxhall's major war assignments was the production of Churchill tanks. Now however it is again Vauxhall Cars which are on the assembly line. Wait for the post war versions of these Vauxhall models which won a popularity in Australia, unapproached by any previous English car—the speedy, economical 10 h.p. Vauxhall Wyvern—and that “happy medium” car the 6-cylinder Vauxhall “14.”

**AREO MOTORS**

FRESHMAN VICTORIA ST. PERTH

**'Miss' BRASSO**

On Her Metal!

With the help of Miss Brasso, tarnish disappears, and metal shines as brightly as the sun.

Made by Rockite.

**SILVO**

**"SILVO" for Silverware.**



# Kids Page

Hello again, I guess you have all settled back into the routine with school work after your 2 weeks off. At least the weather has been really good for you. I wonder what you did during the holidays and did you attend the Anzac Dawn Service at One Tree Hill? Why not write and tell the Kookaburra Club how you spent your holidays or what you thought of the Anzac Service last Monday? I saw many children there, it was a very good Service wasn't it?

I hope you enjoy the jokes and puzzles I have for you this month, if you have a favourite type of puzzle you would like me print let me know. It was great to hear from the Kookaburra Club members this month, it sounds like everyone has been busy doing something of interest. It's getting very hard to pick a winner each month because all of the stories are great.

Until next month Auntie Bev. Email: [oth.grapevine@bigpond.com](mailto:oth.grapevine@bigpond.com) or drop me a line at the Grapevine, Postal address is OTH Grapevine P.O. Box 196 One Tree Hill Post Office, SA 5114.



Find all the words that have something to do with the country Greece. Have fun, it's a little tricky! Try circling the individual letters of each word so that you can find the other words easier.

## Greece Word Search

B	M	D	C	A	O	A	O	F	Z	L	D	O	L	S
M	X	N	F	I	T	L	K	L	Y	R	C	N	I	O
A	X	A	K	R	L	E	Y	N	I	T	F	L	W	U
L	M	L	S	V	O	R	F	M	O	V	O	X	S	V
B	A	S	I	L	I	C	A	P	P	P	E	H	D	L
U	I	I	B	S	J	D	U	G	O	I	E	A	P	A
S	N	E	H	T	A	S	X	R	W	E	C	I	L	K
H	G	R	E	E	K	W	C	M	P	A	T	S	A	I
Z	Z	F	R	A	V	A	E	V	O	D	V	U	K	I
E	A	B	S	J	R	Z	R	E	R	X	H	M	A	P

Acropolis  
Athens  
Basilica  
bread  
dove  
feta  
garlic  
greek



island  
lamb  
octopus  
olive  
olympics  
plaka  
sheep  
souvlaki

Q: What time is it when an elephant sits on your bed?  
A: Time to get a new bed!

Q: Where does a ten ton elephant sit? A: Anywhere it wants to!

Q: What was the first animal in space?  
A: The cow that jumped over the moon!

Q: What do you get when you plant a frog? A: A cr-oak tree!

Q: How is a dog like a telephone? A: It has a collar I.D.

Q: Why do cows wear bells? A: Because their horns don't work!

Q: How do you stop an elephant from charging?  
A: Take away his credit card!

Q: What would happen if pigs could really fly?  
A: The price of bacon would go sky high!

Q: How do you get a dog to stop digging in the garden?  
A: Take away his shovel!



Q: How do you mend a broken pumpkin?  
A: With a pumpkin patch!

Q: How do Eskimos make their beds?  
A: With sheets of ice and blankets of snow!

Q: Why don't mountains get cold in winter?  
A: They wear snowcaps!

Q: What did the snowman say to the customer?  
A: Have an ice day!

Q: What do you call a slow skier?  
A: A slopepoke!



Q: Where does a polar bear keep its money?  
A: In a snow bank!

Q: What do you call a snowman in the desert?  
A: A puddle!

Q: How does an Eskimo stick his house together? A: With igloo!

Q: What is a snowman's favourite breakfast?  
A: Frosted flakes!

Q: If April showers bring May flowers, what do May flowers bring? A: Pilgrims!

Q: What do you call a dog on the beach in summer? A: A hot dog!

Q: Why do bananas use sunscreen?  
A: Because they peel!



Q: Which day do fish dislike the most?  
A: Fryday!

Q: What do you call a cow in a cyclone?  
A: A milkshake!

Q: What did the peanut say to the elephant?  
A: Nothing, peanuts don't talk!

Q: What do you call a deer with no eyes?  
A: No I deer!

Q: Why was the cat afraid of a tree?  
A: Because of the bark!

Q: How are elephants and trees alike?  
A: They both have trunks!



Q: What do you call an exploding monkey?  
A: A baboom!

Q: What do you call an elephant in a phone booth? A: Stuck!

Q: How do you stop a dog barking in the back seat of a car? A: Put him in the front seat!

Q: What is the difference between a car and a bull? A: A car only has one horn!



This month I have two different stories.

Our neighbour came past our place and we asked if she would like to come over for tea. She said she'd be a little while as she had to feed the animals. She was driving her car up to the house to get her phone and when she opened the gate she ran back to the car and tripped over a post. She had a golf ball in her pocket that she had picked up in the paddock. She fell on the ground and couldn't get up. She yelled out "Paul" about three times and our dad sent Samuel over to see if she was okay.

We knew she was helping an Alpaca give birth so we thought she just needed a hand with it. Samuel ran over there and came back and said she can't get up. Our dad went running over and our neighbour said "I think I've broken something call the ambulance". Another neighbour came over and waited at the gate for the Ambulance. We were covering her with blankets as she was going into shock. We tried to get her thinking about funny things. Our dad said to her when our mum phoned the ambulance, they asked if you weighed more than 125kg and our dad replied I don't think so! Our neighbour said, no that was yesterday! Soon the Ambos were there. The Ambulance lady had been down our road a few times helping some other neighbours too. She said she knew the road pretty well. They gave our neighbour some pain relief and we slipped the board under her. We all lifted her up and put her in the trailer because she had a trailer on the back of the car. She was down in the paddock which is steep so the ambulance couldn't drive down to her. We quickly drove her up to the house and my dad told me to run down and see if the alpaca was okay.

I saw this black thing lying on the ground and worked out it was an alpaca. I thought it was dead but then it got up to move a bit. I remember the neighbours telling me that when Alpacas are born they like to lie in the sun. I ran up and they were just putting our neighbour in the ambulance. I told her that it was fine, it was black. It's supposed to be brown she said, she had a bit of a laugh. Our neighbour had broken her hip in two places, above and below the golf ball that she had in her pocket. She is recovering well. The other day when we went over there, we were talking about what she did and she said, one thing I have learned, never put a golf ball in your pocket unless you want a hop along holiday!

On Monday the 25th April we went to the Anzac Dawn Service. We got there and they started talking about Gallipoli. The Catafalque Party came in and stood around the Memorial. A man read out "In Flanders Field" to the people then Joe Federico, on behalf of the Mayor of Playford, Doug from the OTH Uniting Church and a few others laid wreaths at the Memorial. We all sang the Australian Anthem. Then the Catafalque Party saluted the Flag and marched out. We all went inside and had some breakfast. They had really nice sausages. We walked around and looked at all the pictures and stories about World War 1 and 11. It was terrible what they went through. Thank you for setting up everything so that we were able to have the service there. It was really good.

Joshua Age 11 years.

Thank you for your great stories Joshua, we all enjoy reading about your adventures. Great to hear that you attended the Dawn Service, it was such a good service.

## OTH Kookaburra Club



The Kookaburra Club is open to all children 13 years and under. If you would like to become a member email or post your name, address, birthdate and a story or jokes to the grapevine. (Details are on page 2 of this edition) We have a monthly prize for the best story or jokes, this is a \$10 voucher. Birthday cards and a \$10 voucher will be awarded for your birthday but please note that if you don't submit something for 6 months you will not receive your birthday gift. I hope to hear from lots of you this year.

Thank you to OTH Progress for the awards.

One Sunday, I went to the Weetbix Tryathlon. We had to get up very early in the morning.



We had banana and all different types of Weetbix for breakfast there. When I went swimming I was worried that I would sink. I started sinking so the lady gave me a noodle and pulled me along. Then she gave me a board and a man gave me a noodle as well.

When I got out of the water I went to the transition area. I dried off and hopped on my bike.

When I was riding, there was a boy who when I went to the other side to overtake, he went so I couldn't overtake him. I came back to the transition area and I put my bike back.

Then I started running and I got past 10 people with my running. At the end of the running you get a medal.

Hannah Age 7 years.



Well done Hannah, it sounds like it was a really busy day for you all. Congratulations, you are our winner this month. Please pick up your certificate and voucher from the OTH Country Market on May 7th.

On Easter Monday my Nana, Gramps, Mum and I went to Humbug Scrub Sanctuary for their open day.

It was good fun to see all of the birds and wallabies. My Gramps took me up to the top of the hill to see an emu. Mum and Nana didn't climb the hill.

There were a lot of people at the open day, we had to wait too long to have a sausage for lunch so we went to McDonalds.

I bought a book about dinosaurs at Humbug Scrub, it tells me how to pronounce the names of all the different dinosaurs. Nana couldn't say their names properly and was so funny!

Riley D. Age 4 years with help from Nana.



Q: What did the frog say when he heard "time flies when you are having fun"?

A: Time is fun when you're having flies.



On Saturday I went to my friends 10th birthday party. Because he was turning 10, his party was 10 hours of fun.

We played dodgeball, dancemoves and lots of board games. We played footy and cricket, we rode on our scooters, skateboards and bikes. We had meat pies and sausage rolls for lunch.

After that I dressed up as batman. My friend Scott dressed up as Captain America. We both hid in the toilets. A boy came in and we scared his life out of him! He never came back in. Then we had pizza, burgers, cake and icecream for tea. I said to the birthday boy's mum that it was ten hours of fun for us and 20 hours of pain for his parents. She laughed!



Daniel Age 9 years.

Sunday 17th April I competed in the Weetbix Tryathlon. We left at 6am to get to the Adelaide Aquatic Centre to sign in. Once we signed in we took our bikes to the transition area. Transition is where we come out from our swim, change and hop on our bikes then put our bikes back and run. At 8.40am they called the first group of children 11-15 year olds.

They gave us a lecture for 1/2 hour then we lined up to swim. The lecture was boring. After we had waited by the pool we jumped in the pool and swam.

I was the fastest our of my group. After the 150 metre swim, we climbed out of the pool and ran down to the transition area where we dried off and put our sneakers, shorts and tops on.

I hopped on my bike and did a 6km bike ride where I beat a lot of other groups up from me. Then I took my bike back into transition and went for 1km run. Once I finished, I got a medal for competing and they took a photo. I had some free breakfast that Weetbix supplied.



Samuel Age 13 years.

Well done Samuel, it sounds like you had a good day and plenty of exercise.

### A Poem written for Anzac Day

"On the ships they rode away  
to land far from home,  
carrying their guns  
and following the sun,  
to fight at the warzone.

They kept on shooting all the way  
while missiles rained  
and rained that day,  
down in the dirty trenches."

By Tom D. Age 9 years.



Thank you for the poem Tom very well done. You came a very close 2nd this month.

Q: Why did the elephant paint his toenails different colours?

A: So he could hide in a packet of M&M's.

Q: How do you catch a squirrel?

A: Climb a tree and act like a nut!

Q: What did one cow say to the other? A: Mooooove over!



## E & A Vanin

### LOCAL PLUMBING SERVICES

DOMESTIC - COMMERCIAL - INDUSTRIAL

- General Plumbing Maintenance
- New Homes and Extensions
- Drains and Stormwater
- Bathroom Renovations
- Hot Water Service Changeovers

REGISTERED  
MASTER PLUMBER  
EDDY VANIN PROPRIETOR  
Ph: 0412 394 689  
or Home/Office  
8280 7970



## Rob Green Security

Servicing, Installation, Monitoring  
Your Local Technician

Ph: 0419 398 346



### Dr. Steven O'Connor (Acupuncture)

B.HSc(Acu), Adv. Dip. Nat., Adv. Dip. HM.,  
Dip. App. Sc(Ag), Dip. RM.

Acupuncture, Remedial Massage,  
Naturopathy. For Alternative Natural  
Medical Solutions for health needs  
Health Rebates Apply

Kilberin, Cornishmans Hill Road, OTH or  
Shop 11 Munno Para Shopping  
Centre 8280 7003 or 8284 1511  
or Mobile: 0407 820 422



## SEPTIC TANKS PUMPED OUT

For good old fashioned service

PH: 8445 7852

- \* Septic Tank Pump Outs
- \* Sewer Transfers
- \* Holding Tank Pump Outs
- \* Rainwater Pump Outs
- \* Minor Repairs to Septic Tanks



Email:  
septic1@bigpond.com

Web site:  
www.septicpumpingservices.com.au

### ADVERTISING RATES FOR THE GRAPEVINE

2016

#### COLOUR ADS:

Eighth Page	\$35.00
Quarter Page	\$70.00
Half Page	\$175.00
Full Page	\$375.00

To advertise in the Grapevine you must  
be a One Tree Hill resident or have  
a business in the town

PLEASE NOTE ALL ADVERTISING IS TO BE PAID  
BY PUBLICATION DATE UNLESS OTHER  
ARRANGEMENTS HAVE BEEN MADE

#### BLACK & WHITE

Eighth Page	\$25.00
Quarter Page	\$50.00
Half Page	\$120.00
Full Page	\$275.00

PHONE: 8280 7095

EMAIL: oth.grapevine@bigpond.com

All advertisements must be in by the  
deadline which is shown on the front  
page of each edition of the Grapevine

#### CLASSIFIEDS:

	\$10.00
--	---------

Time is like a river.  
You cannot touch the same  
water twice, because the  
flow that has passed will  
never pass again.  
Enjoy every moment  
of your life.

## Roger Girdham Electrical Pty.Ltd.



For all your  
Electrical  
Installations and  
Maintenance jobs

Call Roger on

0417 853 863 or

8280 7788

Serving the local community for 18 years

Proud Sponsors of the One Tree Hill  
Cricket Club & Tennis Club

Elec. Lic PGE 147979



## Horse Care - IDEAS NEEDED FOR TOPICS

I have been writing these articles for a few years now and I am running out of things to write about. Please send in your questions or discussion ideas. Meanwhile, I will work through the alphabet for those interested.

A is for:

**Andalusian** - a breed. They are often displayed with women in Spanish costume riding on the rump behind the gentleman. The level rump makes it a comfortable seat. They are often used for dressage.



**Appaloosa** - another breed. This one is known for its spots but Appaloosas may be "few spots" and even have none.

Originating on the Palouse River, in USA, they were bred by American Indians.

They come in several colour variants including: white spots on coloured background ("snowflake"), coloured spots on white background ("leopard"), mostly coloured (often bay or chestnut) with white over the hind quarters that then has the same coloured spots as the base colour ("blanket"). "Few spot" appaloosas may appear to have no spots but they will still have some of the breed distinctions: hooves that are striped vertically is classic.



**Arab** - another breed. This one has been around for thousands of years. The Arab people maintained meticulous records, memorizing the parentage of their best horses for generations. Their mares were prized above the stallions and their own wives, usually sleeping in the tents. Arabs have a reputation for being difficult to handle but this is because they are intelligent and brave. Most breeds of horse have some Arab in them.



**Ardennes** - a heavy horse breed from France/Belgium, one of the biggest horses in the world.



**Australian Stock Horse** - a recent addition to the breeds of horses, they have been bred for 200 years, mixing Thoroughbreds with ponies and even some light Draught horses. They have been created to excel at working stock in Australian conditions; hot, dry, floods, poor feed, long hours. It is only in recent years that registration has happened. The Walers, sent to war for many years and recognised as the finest cavalry horses anywhere, were one example of what became Waler or ASH breeding. There are now 2 distinct breeds recognised, the Waler is slightly heavier than the ASH, which tends to have more Thoroughbred in it.



**Arena** - Each discipline has its own arena size. We often speak of a "full size arena". This usually refers to a standard dressage arena, which is 60 metres by 20 metres. A Pony Club arena is 40m x 20m. A jumping arena should be a minimum of 50m x 70m but may be bigger. Games arenas each have their own sizes (just like football codes) with Mounted Games, polo and polocrosse each having different sizes. Arenas should be reasonably flat (without too many dips) and also level although some slope is acceptable. They are often sand but occasionally grassed. They should never be slippery.



If you have any horse query for Julie please email or post to the Grapevine and we will pass it on.

P.O. Box 196, OTH, 5114

Email:

[oth.grapevine@bigpond.com](mailto:oth.grapevine@bigpond.com)



## DIVA DEN HAIR

Introducing the

**DIVA DEN \$99 HAIR PACKS**

Colour \*OR 1/2 Head Foils\*

Style Cut and Blowdry

**OPALEX Colour upgrade**

(Valued at \$30)

All this for only \$99

FIND US ON FACEBOOK



Mention The Grapevine for this offer

Offer not valid with any other promotion

\*longer hair extra\*

Pelican Plaza Shopping Centre

Cnr Nth East & Golden Grove Rd

RIDGEHAVEN SA, 5097



**BOOK NOW Ph: 8263 9222**

## Uses for WD-40

Everyone has heard and used WD-40 at least once in their life. WD-40 is a cleaning agent, lubricant, and an anti-corrosive product, which can be quite handy around the house. The name WD-40 actually means Water Displacement—40th attempt. The person behind the product wanted to design a formula which would prevent corrosion, and was successful at his 40th attempt.

There is a safety notice with this article. It can be dangerous for pets and the fumes can also be dangerous for little children so it's not advised to be used around them.

\* Did you know that you can easily remove chewing gum that is stuck in your hair. You just need to spray some WD-40 on the tangled gum and you can comb it out without problems. Just be careful not to get in contact with eyes and use the spray outside in a well ventilated area.

\* When 2 drinking glasses are locked together you don't want to risk breaking one or both by trying to pull them apart. Stuck glasses will separate with ease if you squirt WD-40 on them, wait a few seconds and then gently pull apart.

\* Is there a ring stuck on your finger, no problem, a short burst of WD-40 will get the ring to slide off.

\* Remove tea stains from your bench tops with a little WD-40 on a damp sponge and the stain wipes away.

\* Clean your toilet bowls with WD-40, spray into the bowl for a couple of seconds and swish the brush around, the solvents in the WD-40 will help dissolve any build up of lime.

\* Waterproof your winter boots by giving them a coat of WD-40, it will act as a barrier so water can't penetrate the material. (Now all we need is rain!) More uses next month so keep an eye out for them.



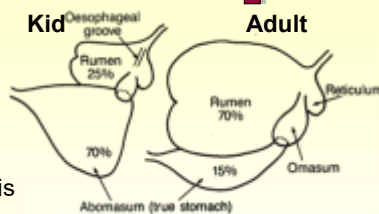


# Goats - Alphabetically Speaking



**Abomasum:** Ruminants, such as goats, cattle, sheep and deer, have 4 stomachs. The Abomasum is the 4th one in the gastric tract. Here enzymes and acids are released to digest the proteins. In young kids, the milk is diverted from the rumen

(First stomach) to the abomasum. It is the part of the stomach system that most closely resembles the stomach of humans.



**Abscess:** Grass seeds may cause abscesses by piercing the skin. They often migrate through the body. In particular, they may be picked up in feed and then migrate through the jaw, exiting through the skin. Grass seed abscesses are a minor infection, but they can cause your goat serious discomfort when they are breaking through the skin. You can lance the abscess if you are certain that you know what you're doing, or get the vet to check it out. Be aware that lancing an abscess on your goat's face is dangerous. You may cause paralysis or other types of nerve damage if you hit one of the many nerves on the face. Barley grass is one of the worst offenders as the awns (bristles on the sides of the seed) drive the seed deeper with every movement. It is a good feed while green, but a real problem when it starts to dry off.

**CLA (Caseous Lymphadenitis Abscess) :** A common form of Abscess can be caused by CLA, or 'cheesy gland'. The pus that forms looks like cottage cheese, hence the name. These abscesses can appear anywhere on the body and they are highly infectious. The pus is the main infective agent, but not the only one. CLA can be prevented by vaccination. Meat from CLA - affected goats is condemned in slaughterhouses and should not

be eaten as there may be minute abscesses which are not visible to the naked eye.

**Acetonaemia or Ketosis:** This is a version of pregnancy toxemia that occurs after kidding. It usually only occurs in heavy milkers and can be treated in the early stages, or prevented, by feeding molasses. In later stages, glycerine can help if it is fed at a rate of 120ml per day for 5 days. You may need to force feed it by syringe. Otherwise you may need a vet.

You can help to prevent acetonaemia by feeding plenty of browse as well as hard feed to suit your goat's milk production. One of the early signs of acetonaemia is lethargy. The smell of nail polish remover on her breath is also a useful sign. The chemical that you can smell is acetone, which is a major chemical in nail polish remover. Occasionally you may smell it in the milk. The milk is still fit to drink but can have a nasty taste. It is a clear indicator that the goat needs urgent help.

**Afterbirth:** The afterbirth, or placenta, should be delivered within an hour, two at the most. Retention of the placenta will cause infections in the goat. Do not handle the placenta with your bare hands: it is the most frequent source of Q fever infection. Goats often eat it soon after passing it. Although this is natural there is no reason why they should. You can take it away and bury it. I believe goats get some nutrients from it but their main aim in eating it is to reduce the attraction for carnivores.

*Please email the Grapevine if you have any queries on goat care and we will pass your correspondence on to Julie Buttery who wrote this article.*

[oth.grapevine@bigpond.com](mailto:oth.grapevine@bigpond.com)  
or P.O. Box 196 One Tree Hill, 5114.



## ALL ROAD SEAL

### Not Happy with your driveway?

- **SPRAY SEAL** is a very cost effective for driveway's and roads
- **SPRAY SEAL** is made up from liquid bitumen emulsion and aggregate and rolled
- Strong and durable
  - Flexible to all weather conditions
  - Cuts dust problems
- Improves looks and safety
- Adds value to your property
  - No maintenance, easy repair if needed
- A lot cheaper than concrete or paving
- Can be put down on existing surface, depending on quality of base
- Can be driven on straight away
- Guaranteed Workmanship

Surfaced over 15 years

Newly Surfaced

**Tony & Aaron Bobridge**  
**0408 899 688**  
[ALLROADSEAL@GMAIL.COM](mailto:ALLROADSEAL@GMAIL.COM)

CAN ARRANGE EASY FINANCE

## ONE TREE HILL POST OFFICE

YOUR ONE STOP SHOP TO PAY BILLS

GIFT & POST FOR ALL YOUR BANKING,

NEW GIFTWARE ARRIVING

GIFT & POST FOR ALL YOUR BANKING,

BILL PAYING, POSTAL NEEDS, GIFTS AND LOTS MORE

PH: 8280 0090 FAX: 8280 0030

OPENING HOURS: MONDAY TO FRIDAY 8AM - 5PM  
SATURDAY 9AM - 12PM

Agents for

SHOP 1B LOT 2 BLACK TOP ROAD, ONE TREE HILL, 5114

## PROPEST

management services

# 1800 24 22 21

## We Service any Pest No Problem!

- \* Termite/White Ant Removal
- \* General Pest Control
- \* Free Site Assessment
- \* Existing and Pre Purchase Property Inspections

- \* Termite Baiting Systems
- \* European Wasp & Bee Removal

www.propestcontrol.com.au

PO Box 193  
One Tree Hill, SA 5114





# Growing Herbs



**How to Start a Herb Garden.** Herbs are very easy to grow with a little sunshine, soil that drains well, some watering, and a little fertilizer or compost. Herbs can be grown in pots; however, the plants always prefer to be in the ground where they can spread out. Some plants grow quite large and when placed in pots they can become stunted and can get stressed, which causes them to be very unhappy.

One of the important elements to growing herbs is to put them in the right place. The main requirement for growing herbs is growing them in the correct position in your garden. Almost all herbs prefer partial full sun but with our summers being so hot it is best to consider planting them in an area that gets morning sun and afternoon shade or filtered light (such as under a tree that allows some light to pass through). Check the area several times during the day to make sure that there are at least four hours of sun.

When planting herbs in the garden you will need around 30cm in diameter for each plant, depending on the plant. For Rosemary, Sage, Mints, Oregano and Marjoram you will need about a metre, 60cm for Basils, Thyme, Tarragon and Savory, 30cm for Chives, Dill and Parsley.

You will need to prepare the soil, dig it over with a large garden fork to loosen the soil that has become compacted over the years. This will allow water to drain and creates space for plant roots to reach down into the soil. Add compost to your soil, mix it into the soil so that it helps provide drainage.

The final step is to plant healthy, strong plants and water them when they become dry. Most herbs like to be watered but be careful not to over water them as this will result in reduced growth.

When you are ready to harvest your herbs, you simply cut off a branch when the plant reaches at least 15cm. By cutting close to a leaf intersection, your plants will regrow very quickly. Some plants such as parsley grow new leaves from their centre. In this case the oldest branches need to be completely removed, leaving the new tiny branches growing from the centre. This becomes clearer as you watch your plants grow and mature.

If you want to grow herbs in containers you'll find them easier than many houseplants. All you need is a sunny, warm place and containers large enough for your plants to grow. Sunny decks, patios and other such areas are great for container gardening. By growing herbs in containers, you save yourself the difficulty of digging that starting a garden plot requires.

If you are lucky enough to have a great location for a garden, and you like to work outdoors, remember that your plants always prefer to be in the ground. Container gardening requires diligent watering and regular feeding, but it can be easy and fun.

Some of the plants that are ideal for containers are Basil, Bay Tree, Chives, Coriander, Fennel, Lemongrass, Parsley, Rosemary, Spearmint, Sage and Thyme.

The following are more suited for growing in a garden bed, Basil, Bay Tree, Chives, Coriander, Rosemary, Fennel, Lemongrass, Oregano, Parsley, Dill, Spearmint and Thyme.

It is very enjoyable growing herbs as you can reap the rewards in no time as herbs are fast growing. Don't forget to get the kids involved because they will be fascinated when you are able to pick the herbs for cooking a family meal. Now is a good time to be planting your herbs, don't wait until we get frosts that can damage the plants.



## Vaseline And Its Many Uses

Good old Vaseline, it's been around forever! We have sourced some uses for it, perhaps it should be called "miracle jelly". Vaseline has many benefits that you probably hadn't thought of, we bet this will change your perspective about Vaseline.

\* If when going out you want to go for the natural look try applying Vaseline on your eyelashes and then use an eyelash curler to make your lashes look thick, long and curved. Vaseline can also turn your matte eye shadows into glossy ones by mixing them with Vaseline.

\* Hair care: Vaseline is ideal for girls who want to give their hair some extra care, from root to the tip. Use Vaseline on your hair just the way you use oil and get rid of the split ends, dry hair, frizzy hair and damaged hair. It will also moisturize your scalp and make your hair shine.

\* Stain Cleaner: Tough stains on clothes are not a problem anymore when Vaseline is around. Apply Vaseline where you normally apply some detergent and wash with water. The stain will vanish instantly. This remedy is best to get rid of make up stains.

\* You don't need to buy expensive cleansers when you have Vaseline at home. You can gently remove your eye makeup with the help of Vaseline. You can also use it as a gentle scrub and get rid of clogged pores and dead skin cells, just add a teaspoon of sea salt or sugar to it and massage gently on the face, you will get clear moisturized skin instantly.

\* Furniture care: Watermarks on furniture are hard to get rid

of, but with Vaseline you can have clean shiny furniture in no time. Just put a thin coat of Vaseline on the water marks and wipe away with a clean cloth.



\* Wax and Chewing Gum Remover: Don't get stressed if you have gum or wax on your furniture. Rub them off with the help of Vaseline and they will vanish instantly. Not only will it help remove the wax from the candelabras but it will also help keep them shiny.

\* Shoe Polish: If you run out of shoe polish at home, Vaseline can do the work. Polish your shoes with Vaseline and they will become as good as new. It is not only ideal for scuffed shoes, but also for bags and other leather goods.

\* DVD and CD Cleaner: Now you can keep your DVDs and CDs scratchless by smearing a coat of Vaseline on them. In case your CD's are already scratched then fill in those scratches with the jelly using a cotton bud.

\* Vaseline as a Lubricant: From the light bulb, to the cap of your nail polish bottle, Vaseline can help unscrewing both. Before you screw the bulb apply Vaseline to its socket, this will help you unscrew it easily. Nail polish caps sometimes get really hard to unscrew. Whenever you apply a nail colour, just coat the rim of the bottle with Vaseline, this will save you time and energy.

\* We all hate the sound of a squeaky door, stop this noise by applying a coat of Vaseline on the hinges of the door.



# Just NISSmaz

NEW, USED, RECO PARTS  
Cars, Commercial & 4WD's



**Ph: (08) 83591444**

nissmaz@neonet.com.au



We will have a stall at the One Tree Hill Markets in June, July, and August, with information on our:

- Meat sales
- Kamshare cattle program
- Farm services



Come and meet **Juggernaut**, our current Kamshare bull (pictured) and a couple of our gorgeous heifers.

Find out how to be in the running to win a family pass to the royal Adelaide Show (prize will be drawn at the August market)

*We hope to see you there!*



**Professional Tree  
& Stump Service**

**Call Brad for FREE QUOTES**

**8365 8000**

Don't forget to ask for our  
Special Grapevine Price ....

NO JOB TOO BIG  
OR TOO SMALL



**DAVEY**  
MASTER DEALER

**NCPS  
INDUSTRIAL**

Water Products for all your household needs:

- Pressure Pumps
- Pool Products
- Transfer Pumps
- Septic Pumps
- Purification



We Sell, Service & Repair  
**CONTACT US TODAY**



U2, 1445 Main North Rd, Para Hills West, SA 5096

Ph: (08) 8285 2344 Fx: (08) 8285 2355

www.ncpsindustrial.com.au

sales@ncpsindustrial.com.au

(Opposite Bunnings Parafield)

## Olympic Boring Contractors Pty. Ltd Pump Sales & Service



**Specializing in Design & Installation  
of Submersible Pumps**

**Supply & Installation of Domestic Pumps  
including Firefighting Pumps & Solar Pumps**

**Agents for Grundfos and Lowara**

**Sales & Pump Service**

**Over 35 Years of Experience**

**Call Michael Ferraro**

**OTH Resident for almost 30 years**

**Ph: 8380 9474  
0408 847 060**



# The Battle of The Somme - 1916

Fought between July and November 1916, the Battle of the Somme was one of the defining events of the First World War.

The Somme offensive was planned as the major Allied effort on the Western Front for 1916, but the start of a desperate battle between French and German forces at Verdun meant that the British Army assumed the main role.

After an intense, week-long artillery bombardment of German positions, the infantry began their advance at 7.30am on the clear midsummer's morning of July 1, 1916.

While there were some gains to the south, in the north the attacking troops struggled to overcome formidable defenses, many of which had survived the artillery barrage. By the end of the first day, some 57,000 Commonwealth and 2,000 French soldiers had become casualties - more than 19,000 of whom had been killed.

The offensive continued over the following months, and men from every part of Britain and across the Empire took part. Both sides committed huge quantities of manpower and munitions to the struggle.

When the offensive was halted in November, more than 1,000,000 Commonwealth, French and German soldiers had been wounded, captured or killed.

## The CWGC Thiepval Memorial

### Commemorating the Dead

Today, the cemeteries and memorials built and cared for by the Commonwealth War Graves Commission (CWGC) portray the human cost of the battle, and of the fighting that took place across the Somme battlefields throughout the war.

Some 150,000 Commonwealth servicemen lie buried in 250 military and 150 civilian cemeteries on the Somme.

More than 100,000 more were never found or identified. They are not forgotten, but are remembered by name on six memorials to the missing for those whose graves are not known.

## The Thiepval Memorial The Memorial to the missing of the Somme

The Thiepval Memorial is the largest Commonwealth war memorial in the world. It commemorates more than 72,000 men who died in the Somme sector between 1915 and March 1918, more than 90percent of them during the 1916 battle.

The 45 metre high monument stands on a ridge just south of Thiepval village - a heavily fortified German position on the Somme front in 1916. The brick superstructure has 16 stone piers. Each pier has panelled faces and on those panels are inscribed the names of the dead. The memorial was designed by Sir Edwin Lutyens, one of three principal architects employed by the War Graves Commission after the war. Work on the memorial began in 1928, and it was unveiled on August 1, 1932 by Edward, Prince of Wales.

The Thiepval Memorial is both a memorial to the missing and a monument commending the enduring alliance between the British Empire and France. Beside the memorial is a cemetery with equal numbers of Commonwealth and French graves, brought together from all over the Somme battlefield.



## ADELAIDE NORTHERN VETERINARY GROUP

Veterinary Surgeons & Physicians

Dr Alan M. Irving B.V.Sc, MBA

Phone: 8280 7353 or Mobile: 0419 806 213



ONE TREE HILL - MODBURY - SALISBURY - ELIZABETH PARK - ELIZABETH EAST

## Mobile Library Visits the Market



The Mobile Library Van visited the OTH Country Market last month and they will be there again on the 7th May.

Come along from 10am to meet Briana who will have lots of books on show to borrow.



## Local Native Plant Sale

Kersbrook Landcare Nursery at Williamstown

Most plants  
\$2



Coffee Shop  
BYO Box

Saturday 4<sup>th</sup> June  
10am-2pm

More Info  
Contact Yvonne  
0430018007

South Para Reservoir  
2km from Williamstown on the  
Kersbrook Rd



Huge species selection

List on [kersbrook.landcaregroup.org.au](http://kersbrook.landcaregroup.org.au)



# GAWLER **HIRE**

Equipment & Trailer

KANGA LOADERS - BOBCATS - EXCAVATORS

TRAILERS ALL TYPES INCLUDING TIPPERS



HORSE FLOATS

TRUCKS & TRADIE GEAR

EARTH MOVING REQUIREMENTS

\* CARTING \* SPREADING \* RUBBISH REMOVAL

Phone: 85225 700

or 0418 823 287

E mail: [hire99@bigpond.com](mailto:hire99@bigpond.com)

Web: [www.hiregawler.com.au](http://www.hiregawler.com.au)

WE CAN  
DELIVER!

8 Paxton Street, Willaston

ABN: 99116054105

## JUST WRECKING TOYOTAS

Huge range of 4WD, Car  
& Commercial Vehicle  
parts on offer

Call 8359 44 99

Auto Part Recycling Specialists

IMPORTING DIRECT FROM JAPAN

- ✓ All Toyota Models
- ✓ 4x4 & Light Commercial
- ✓ Mechanical Repairs to All Makes
- ✓ New & Used Auto Parts
- ✓ Free Parts Location Service, Australia Wide

- ✓ 90 Day Guarantee
- ✓ Delivery Available with Metro Area
- ✓ Reconditioning of Engines & Gear Boxes
- ✓ Fit & Repair of All Parts



CALL US NOW FOR GREAT SERVICE & A FREE QUOTE

**8359 4499**

[www.justwrecking.com.au](http://www.justwrecking.com.au)

Servicing East, South, North & West Areas

OPENING HOURS

Mon - Fri 8am - 5pm  
Sat 8am - 12:30pm

150 South Terrace, Wingfield

Corner South Rd & South Tce, Next to Railway Line

New & Old Homes  
Interior & Exterior painting  
Gyprocking  
Commercial

## Bradley Symonds Painting

Qualified Painter  
Pensioner Discount

ph: 0432548330

## Looking for Roller Shutters?

For a FREE Measure & Quote  
Call Your Local Supplier



ESJ INSTALLATIONS PTY LTD.

One Tree Hill

Contact Earl on 0409 426 255

or A/H: 8280 7741

A1 Quality Workmanship & Materials  
Repairs and Conversions on Existing Shutters

**WE WILL NOT BE BEATEN  
ON PRICE!!**

## Birdwood Pump & Irrigation Services

Now Servicing the One Tree Hill area

We Specialize in

Agricultural Bores, Pumps & Irrigation

All Makes & Models Available

Call David

**0438 685 089**



Agents for Grundfos Sales



## RECYCLING - BULKY - GOODS

**COLLECTION**  
FROM \$30 PER ITEM

**SKIP**  
Open Waste  
FROM \$80

**DROP OFF-**  
Mattress  
FROM \$15



[www.distribution360.com.au](http://www.distribution360.com.au)

**D3** DISTRIBUTION 360 Pty Ltd

**0414 280 891**



Lot 10 Hatcher Court, BURTON SA

**ecomcompounding chemist**  
precision medicine for you, your family and pet

**One Tree Hill PHARMACY**

Do you suffer from back pain?

Does it shoot down your legs?

Have you heard of Iontophoresis?

Iontophoresis has been shown to be very effective for back pain management. For further details come ask in store.

Shop 3 (Next to Fodder Store),  
9 Black Top Road, One Tree Hill

OR

**8280 7890**

**8389 3351**

OPEN Mon-Fri 1.30 till 5.30 pm

**Ezyklean**  
carpet cleaning

*We don't cut corners we clean them*

Specialized cleaning in homes, caravans and vehicles

- ✓ cleaning carpets, rugs
- ✓ fabric & leather upholstery
- ✓ grout & tiles
- ✓ mattresses
- ✓ water restoration and insurance claims

Unit \$100 & a further  
10% discount when 3  
or more residents book  
at the same time

Phone: **0438 299 333** for quotes and bookings

**One Tree Hill** 3,971m<sup>2</sup> **\$645,000**



**One Tree Hill/Humbug Scrub** 20.24 acres **\$735,000**



**One Tree Hill** 16<sup>3</sup>/<sub>4</sub> acres **\$765,000**



*Thinking of selling or know of someone who is?*

Then this booklet is a must read!

**A book that could make you  
THOUSANDS of dollars**

**Yours FREE**

This book shows you how to present your property for sale and gives you tips on how to select, and work with, a real estate agent.

Whether you are an experienced property seller or a novice, this book could make you Thousands of dollars.

It's yours **FREE**—no charge or obligation.

Contact us now and we will home deliver your copy.

Ph 08 8280 0033 Email: [mail@countryestates.com](mailto:mail@countryestates.com)

*When you sell with Country Estates you will receive:-*

- ◆ No Administration Fees
- ◆ No Ongoing Monthly Fees
- ◆ Free Marketing
- ◆ Superior Marketing Strategies
- ◆ Highest Possible Price
- ◆ Highly Skilled Negotiators
- ◆ Registered Buyers
- ◆ Teamwork - multiple agents working for you
- ◆ Local Knowledge
- ◆ Experience-Over 40 years
- ◆ Multiple Offices
- ◆ Honesty



**COUNTRY ESTATES**  
REALTY

[www.countryestates.com.au](http://www.countryestates.com.au)  
Shop 2 Black Top Road One Tree Hill

**Ph 8280 0033**

RLA 100325



## TV ANTENNA'S

TELESIGNAL ANTENNA SYSTEMS PTY. LTD.

Government Endorsed TV Antenna Installer

- \* Digital TV Antenna Installations
- \* Extra TV Points
- \* Digital Box Set Up & Tuning
- \* Tune & Set Up TV, Video, DVD's & Blu-Ray
- \* Pay TV Cabling
- \* Watch Foxtel in any room with Pay TV System

Call for a FREE Quote Today  
Local Resident

Phone: Ian George 0417 809 403

Email: [telesign@bigpond.net.au](mailto:telesign@bigpond.net.au)

Website: [www.telesignal.com.au](http://www.telesignal.com.au)

## VOLUNTEERS

### WANTED

Friends of Para Wirra

Volunteers of the Park

meet twice a month

every 1st Wednesday

and 3rd Saturday at

9.00am at Park Office

(via main entrance off

Humburg Scrub Road)

If you love the bush and

would like to join our

happy crew, please

contact us between

9.00am & 9.00pm

any day

Ph: 8280 7279

## ONE TREE HILL COUNTRY MARKET

8.30am until 1.00pm

* March 5th	* August 6th	* Russian Cooking	* Bakery Items
* April 2nd	* September 3rd	* Hand made cards	* Craft Supplies
* May 7th	* October 1st	* Candles & Soaps	* Books
* June 4th	* November 5th	* Jewellery	* Baby wear
* July 2nd	* December 3rd	* Knitted Items	* Wooden Toys
1st SATURDAY OF EACH MONTH		* Olive Oil	* Honey
		* Wedding Charms	* Jams & Sauces
		* Painted Candles	* Soy Candles
		* Glass Engraving	* Bric-a-Brac
		* Lucky Dips	* Haberdashery
		* Dog Accessories	* Lots of Plants
		* Fresh Fruit & Veg	* Face Painting
		* Uniting Church Stall	* Embroidery
		* Fresh Farm Eggs	* Embroidery
		* Scouts Sausage Sizzle	PLUS LOTS MORE



Local Produce and Products available  
OTH Institute, Black Top Road, OTH  
Stall Enquiries Please call 0448 208 338 or  
Email: [oth.market@bigpond.com](mailto:oth.market@bigpond.com)

## MOBILE LIBRARY MAY DATES

The Playford Mobile Library will be at the OTH Institute on Friday the 13th and 27th.

The van parks outside the OTH Institute from 3.00 to 4.00pm. Also see them at the OTH Country Market on the 7th May.



Next time you're stressed,  
take a step back,  
inhale and laugh.

Remember who you are  
and why you're here.

You're never given anything  
in this world that you can't handle.

Be strong,  
be flexible, love yourself,  
and love others.

Always remember,  
just keep moving forward

## COMMUNITY DIRECTORY

Hall Hire Ph: 8280 0000 or 0459 105 045

Council Member	Joe Federico	0417 016 164
C/Member & JP	Andrew Craig	0417 016 160
Cricket Club	Brian Walter	0418 815 047
Federal MP	Nick Champion	8254 2422
Friends of Para Wirra	Patsy Johnson	8280 7279
Home Assist	Playford Council	8256 0355
Nth Hills Pony Club	Sharon Xanthopoulos	0401 214 950
OTH Grapevine	Editorial Team	8280 7095
OTH Country Market	Enquiries	0448 208 338
OTH Institute Enquiries & Bookings		8280 0000
OTH Progress Ass	Secretary	8280 7095
OTH Playgroup	Monday	0417 140 574
OTH Playgroup	Wednesday	0428 829 988
OTH Primary School	Front Desk	8280 7027
Playford Band	Ivor McLatchie	8280 7214
Scout Group	Mike Branson	0430 422 895
Senior Citizens	Phil Waldegrave	0419 374 813
Soccer Club Registrar	Jules	0418 326 477
State MP	Jon Gee	8254 1023
Tennis Club	Gary	8280 7067 or 0415 399 658
Walking Club (Walkie Talkies)	Helen	8280 7035

### Playford Council Contact Details

24 hour Emergency & Lost/found dogs 8256 0333

General Enquiries and Burning Permits (seasonal)

8256 0333 Email: [playford@playford.sa.gov.au](mailto:playford@playford.sa.gov.au)

Libraries: Elizabeth 8256 0334

When telephoning council with a request please remember to get a Customer Registration Number (CRN) to ensure registration and easy identification of your communication. You can also phone or email your local Councillors.

Joe Federico Ph: 0417 016 164

Email: [crjfederico@playford.sa.gov.au](mailto:crjfederico@playford.sa.gov.au)

Andrew Craig Ph: 0417 016 160

Email: [adcraig@playford.sa.gov.au](mailto:adcraig@playford.sa.gov.au)



## SENIOR CITIZENS

If you are over 50 years of age you are welcome to attend the One Tree Hill Senior Citizens. It is held each Tuesday afternoon at the One Tree Hill Institute, starting at 1.30pm and finishing at 4.00pm.

There is a variety of activities to join in, including carpet bowls, cards, outings in the bus or just a general chat and sing-a-long.

Please feel welcome to join the Senior Citizens if you are new to the town, recently retired or just want an outing.

It's a great way to meet new friends.

Please phone Phil Waldegrave for further information on 8522 2228





## AIR CONDITIONING

### SEYMOUR HEATING & COOLING

Installations of Ducted Reverse  
Cycle, Ducted Evaporative,  
Ducted Gas, Combustion Heaters  
and Servicing



**20 Years Experience**  
For a FREE Quote call

**Wayne on 0411 410 889**

## AUTO REPAIRS

### BLACKTOP

AUTO REPAIRS  
& TYRE CENTRE

GENERAL

ENGINEERING

REPAIRS

4-Wheel Drives

All Mechanical Repairs

Log Book Servicing

Phone: 8280 7255

or John on Mobile

0466 936 135

## BOBCAT & TIPPER HIRE

- Driveways, Paving
- Post Holes, Trenching
- Turf & Irrigation
- Rubbish & Scrap Removal
- Retaining walls
- Livestock Burial & more ....



### EARTHWORKS

Phone Rick

0418 829 332



## EARTHMOVERS

### L.B.H. EARTHMOVERS

- \* Site cuts, pads prepped for houses, sheds, tanks, arenas etc.
- \* Driveways prepared and rubbled
- \* Concrete demo and removal
- \* Septics and Soakages
- \* Yards and site clean ups
- \* Detailed excavations, footings etc.
- \* All general earthworks
- \* Large and small machines
- \* Large and small jobs

Established 1999 Owner Operator

Phone Lindsay 0404 109 089

ABN: 38 160 524 122



## GARDENING

Jim's Mowing

- \* Lawn Mowing
  - \* Tree Lopping
  - \* New Lawns
  - \* Fertilising
  - \* Weed Control
  - \* Pruning
  - \* Rubbish Removal
  - \* Landscaping
  - \* Shed Cleanouts
- Ring Geoff on  
**0407 733 832**  
if no answer call  
**131546**

## LAWN MOWING

Adam's Lawnmowing  
Service

- Garden Rubbish Removal
- Spraying
- Small Block Slashing
- Garden & Yard Maintenance
- Gutter Cleaning

Ph: 0417 834 516

adslawns@bigpond.com

## MAINTENANCE

WARNER'S HOME  
MAINTENANCE

- \* Gardening
- \* Odd Jobs
- \* Painting
- \* Pruning
- \* Gutter Cleaning
- \* Basic Home Maintenance

Call Pete:

**0433 619 108**

## PEST CONTROL

### BEST PEST CONTROL

- Ants
- Flies
- Termites
- Bees
- Spiders
- Earwigs
- Millipedes



Call Paul on

**0418 893 411**

## PLANTS

DEALTRY NATIVE  
PLANTS  
WHOLESALE

Trevilla Road, (Off  
Frank Barker Road

OPEN 1st Two  
Weekends each  
Month 10am-4pm  
Plants from \$1.00

Phone for directions

Ph: 8280 7079 or

**0402 010 877**

Gift Vouchers Available

## FOR SALE

**WOULD YOU  
LIKE TO  
ADVERTISE  
HERE?**

**COST IS JUST  
\$10 for a  
space this  
size.**

Please contact  
the Grapevine for  
further details

Take the good  
with the bad,  
smile with  
the sad.  
Love what you  
have and  
remember what  
you had.  
Always forgive  
and never  
forget. Learn  
from your  
mistakes but  
never regret.  
People change  
and things go  
wrong, just  
remember that  
life goes on.



To all of the Mums, have a lovely Mother's Day on the 8th May.  
Keep in mind that you may like to buy something for Mother's Day at  
the One Tree Hill Country Market on Saturday 7th May.  
The Market is open from 8.30am until 1.00pm.





## COMMUNITY NOTICE BOARD

Do you have an upcoming Community event or a special announcement that you would like printed on this page? Please keep notices as brief as possible.

Email or call with your details. Email: [oth.grapevine@bigpond.com](mailto:oth.grapevine@bigpond.com)

Phone: 8280 7095 Please note deadline date on the front cover for each edition.



### "Wherever water runs....."

#### Watercourse Management Field Day



Improving our river, creek and gully watercourses for production and the environment.

Come to the **FREE** field day, visiting a grazing property and a nearby orchard to look at common issues found along watercourses and the benefits gained from restoring natural systems.

Find out about \* What is the "riparian zone" and it's importance".  
\* Erosion issues and control options. \* Weeds and management options.  
\* Water quality impacts and stock management. \* Benefits of revegetation. \* Different landholder approaches to restoration activities.

Have a stream, bore or dam? Then bring in a bottled water sample for free salinity testing. Please label with name and contact number.

Date: Saturday May 7th

Time: 10am until 12.30pm

Where: Lower Hermitage and Inglewood area - location and event program provided on registration.

Cost: FREE with morning tea provided.

RSVP: By Wednesday 4th May to Sandy Harbison 0428 824 219 or [harbison2@bigpond.com](mailto:harbison2@bigpond.com) for enquiries and registration.



Government of  
South Australia



Natural Resources  
Adelaide and Mt Lofty Ranges

### Farewell to a Popular Stall Holder From the One Tree Hill Country Market Brian Dunks

It was sad to hear that Brian, a stall holder who has attended the local market for many years, passed away after a relatively short illness. Our thoughts go out to Brenda and family for their loss, we will all miss Brian's cheerful voice at the market.

Our deepest condolences to the Dunks family from all of the stall holders and friends at One Tree Hill.



### SOROPTIMISTS INTERNATIONAL BAROSSA VALLEY



Presents

As a fund raising event on  
Monday 30th May  
A film evening @  
Gawler Cinemas



FLORENCE FOSTER JENKINS

Included: Pre-film drinks & finger food @ 6.15pm

Film screens @ 7.00pm

Cost \$25.00 with proceeds supporting Local and International Projects

### Remembering Kathleen Pearl Needham

Kathleen Pearl Needham, wife of Donald Needham moved to One Tree Hill in 1992 to be near their daughter (Christine Hall) and her family.



They lived on the corner of McGilp and Black Top Roads for about 10 years before moving to a unit in Salisbury East.

Kath enjoyed her time at One Tree Hill and was involved in the local church, OTH Fellowship and Senior Citizens.

She passed away on 27th February, 2016.

She will be remembered by her husband Don, 4 children, 11 grandchildren, and 22 great grandchildren and all her friends.

*Our sincere condolences to Kathleen's family*

Happy  
Mothers  
Day  
2016



### NEXT ONE TREE HILL COUNTRY MARKET

The next market will be held on Saturday 7th May at the OTH Institute, 1009 Black Top Road. Lots of new stall holders as well as the regulars with plenty of goods available including freshly grown veggies and fruit, plants, arts and crafts and items for your home.

If you are feeling hungry or just want a nibble on something we have the Scouts cooking their BBQ, and Farmhouse Bakery products are for sale inside of the hall.

Farmhouse Bakery are now serving hot food, coffee and tea.



For stall enquiries please call Bev 0448 208 338 or Email [oth.market@bigpond.com](mailto:oth.market@bigpond.com)

Next OTH ANNUAL GENERAL MEETING followed by the PROGRESS GENERAL MEETING is Thursday 12th May at 7.30pm. Venue: One Tree Hill Institute, 1009 Black Top Road, One Tree Hill. New members welcome, Progress is at present a small group but with your input we can grow and make One Tree Hill an even better place to live.

